

## **MANDATORY BULLETIN No. SD-1/005 a**

**Concerning:** All airplanes up to SN 60

**Subject:** Installation of new trim setter and additional springs to longitudinal control

**Reason:** Achievement of higher trim resolution and stick forces

**Latest day of action:** Before next flight

**Action carried out by:** RTF planes/manufacturer

Kits/builder (owner)

**Necessary material:** Delivered by manufacturer- trim setter, spring holders 3 x, spring 2x, hardware

**Necessary tools:** Drilling machine, drill O4

**Sheets:** 3

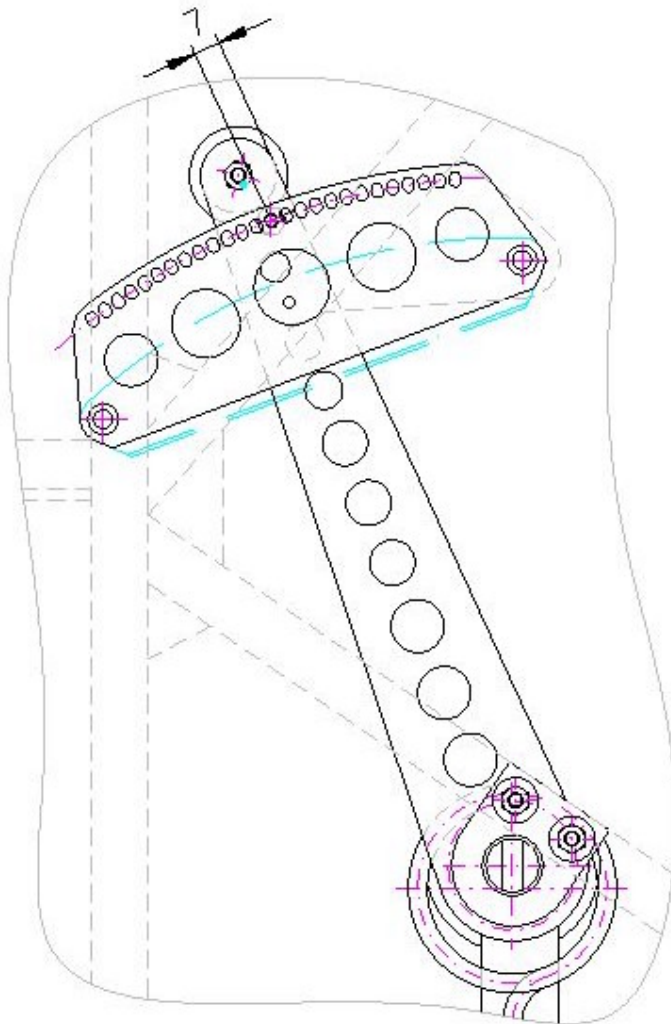
.....  
Igor Spacek  
Designer

14.12.2012

## WORK PROCEDURE

### TRIM SETTER

1. Dismantle original trim setter pos. 21 dwg SD1-60-500 from the fuselage.
2. Dismantle pin pos. 32 and knob pos. 22 from the trim lever pos.7
3. Install new version of trim setter.
4. Mark new hole for pin pos. 32 on trim lever pos. 7 in acc. to bellow drawing and drill hole  $\varnothing 4$  mm.



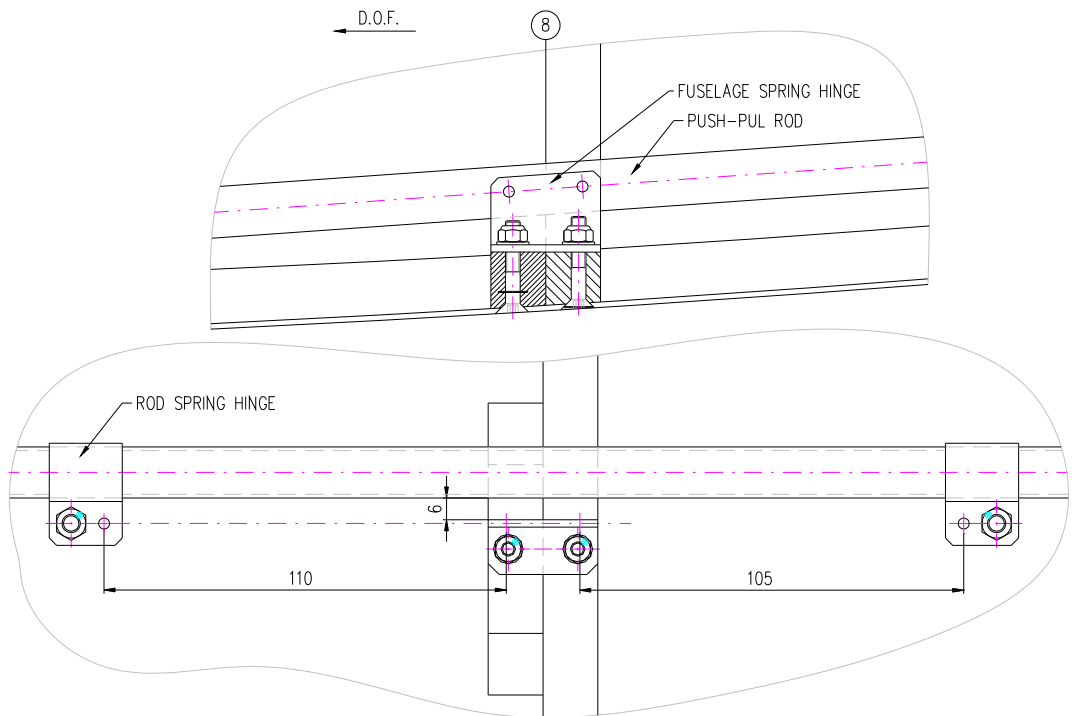
5. Reinstall pin pos. 32 and knob pos. 22.

## ADDITIONAL SPRINGS

1. Cut opening into push-pull rod cover if installed in acc. to bellow image.



2. Put wood reinforcement into place in acc. to bellow drawing mark outline and remove varnish on contact surface.



3. Trim wood reinforcement so that it fits well and bond in place using epoxy.
4. Mark position of fuselage spring hinge, drill first mounting hole  $\text{O } 4 \text{ mm}$ .
5. Install temporary first bolt and drill second hole through spring hinge.
6. Varnish reinforcement and effected structure. Perform final installation of spring hinge.
7. Set trim lever to "tail heavy" position and install rod spring hinges in acc. to drawing.
8. Hinge spring  $\text{O } 9,8$  in front position and  $\text{O } 11,2$  in the aft position